

1 - CONSTRUCTION

- Outside 1 or 2 superposed E glass yarn braids.
- Inside a round and solid E glass braid or cord.
- Braiding with tight stitches. Temperature of use 500 °C.
- UNBLEACHED : Textile ensimage.
- TREATED : Epoxy impregnation fixing the yarns, which makes the jonc stiff and gives a better resistance when cutting.



2 - CHARACTERISTICS

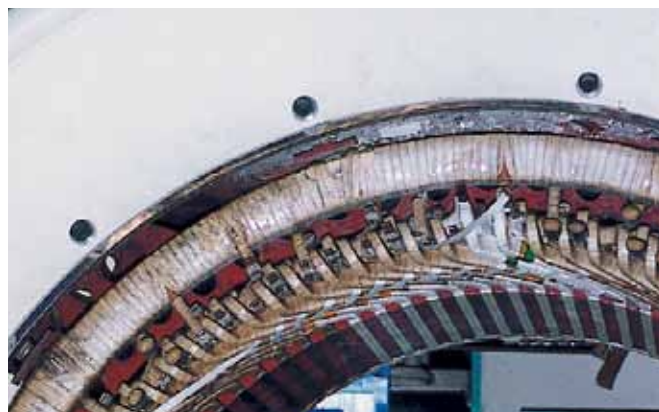
REFERENCE	DIAMETER mm	WEIGHT CORE g/m	WEIGHT 1 braid g/m	WEIGHT 2 braids g/m	TOTAL WEIGHT	LENGTH m
S 058	2	1.90	4.10		6.00	300
S 095	2.5	2.60	4.20		6.80	300
S 097	3.2	10.00	4.60		14.60	250
S 096	3.8	13.80	4.80		18.60	250
S 094	5	16.00	16.00	5.00	37.00	250
S 110	6	21.00	17.00	9.00	47.00	250
S 113	8	30.00	30.00	18.00	78.00	150

3 - APPLICATIONS

- Bindings, bandings, fastenings of elements.
- Heating or not heating resistances support.

4 - PRESENTATION

- Standard diameters :
please refer to the chart above.
- others diameters :please question us.
- Colour : beige or brown.
- Conditioning : jaws bobbins.
- length per bobbin :
Standard : please refer to the chart above.
Others possibilities : please consult us.



We recommend to protect them from dust, humidity at an ambient temperature.