



TERYL® EXPANDABLE TUBULAR BRAID

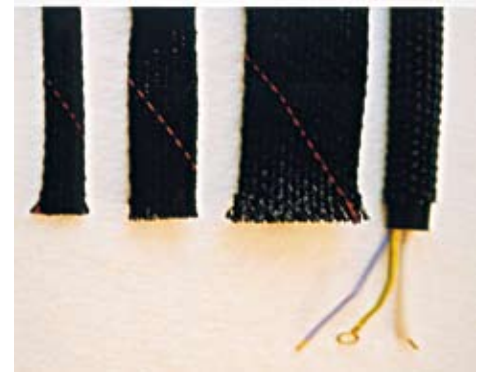
1/1

10/09

E 7

1 - CONSTRUCTION

- Flat and hollow expandable braid in Polyester monofilament yarns
- the building of this braid can cover a large number of dimensions.



2 - CHARACTERISTICS

REFERENCE	WIDTH mm	WEIGHT g/m	DIAMETER MINI mm	DIAMETER MAXI mm	YARNS NUMBER
T 101	4	3.00	2	6	16*3
T 101	6	4.00	4	8	24*3
T 101	8	6.50	6	10	32*3
T 101	10	7.00	7	13	48*3
T 101	12	9.00	8	16	56*3
T 101	14	11.00	10	18	64*3
T 101	18	13.00	13	23	72*3
T 101	22	15.00	16	28	88*3
T 101	26	18.00	18	32	96*3
T 101	30	22.00	20	40	72*4
T 101	40	30.00	30	50	88*4
T 101	50	40.00	40	60	96*4

- Thickness : 0.5 mm ± 0.1 mm
- Width : Flat without tension

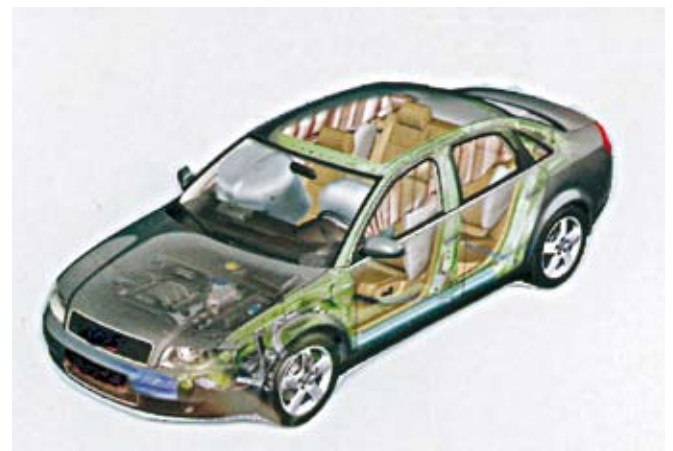
- Temperature of use : - 50°C +150°C

3 - APPLICATIONS

- Mechanical protection of tubes, cables and bundles of cables.

4 - PRESENTATION

- Standard widths : Refer to the chart above.
- Other widths : please question us.
- Colour : Black.



We recommend to protect them from dust, humidity and at an ambient temperature.